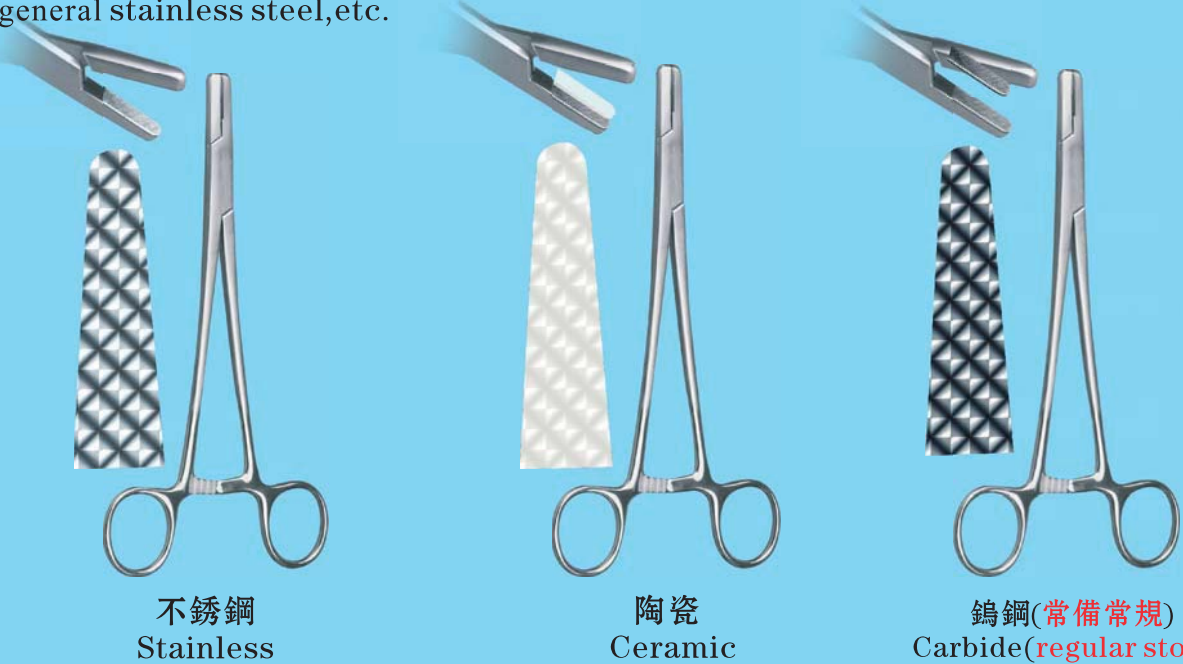


- ★、可依要求生產不同刃部材料類型（陶瓷類、鎢鋼類、高品級不銹鋼類、鈦及鈦合金類、一般不銹鋼.....等系列）
- ★、we can produce cutting edges from various types of material as per the requirement, like ceramic, carbide, high grade stainless steel, titanium and titanium alloy, general stainless steel, etc.



※ 刃部加工等級：

- AAA級： CNC超硬砂輪，鏡面研磨任意形狀之刃口，可任意角度的刃口鋒利程度、鏡面齒尖。
 A A級： CNC超硬砂輪，精研磨任意形狀之刃口，可任意角度的刃口鋒利程度、高光潔齒尖，鋒利的齒尖。(常備常規)
 A級： CNC超硬砂輪，一般研磨任意形狀之刃口，可任意角度的刃口鋒利程度。(常備常規)
 B級： 高精度鎢鋼模具成型，鈍化型齒尖。
 C級： 一般鎢鋼模具成型一般的齒尖。

※ Cutting edge machining grades:

- Class AAA: CNC super hard grinding wheel, mirror surface grinding any shape of cutting edge, the sharpness degree of the cutting edge and the mirror surface tooth top can be any angle.
 Class A A: CNC super hard grinding wheel, finish grinding any shape of cutting edge, the sharpness degree of the cutting edge, the high smooth finish tooth top and the sharp tooth top can be any angle. (regular stock)
 Class A : CNC super hard grinding wheel, general grinding any shape of cutting edge, the sharpness degree of the cutting edge can be any angle. (regular stock)
 Class B : High precision carbide mould profile, passivated type tooth top.
 Class C : General carbide mould profile general tooth top.

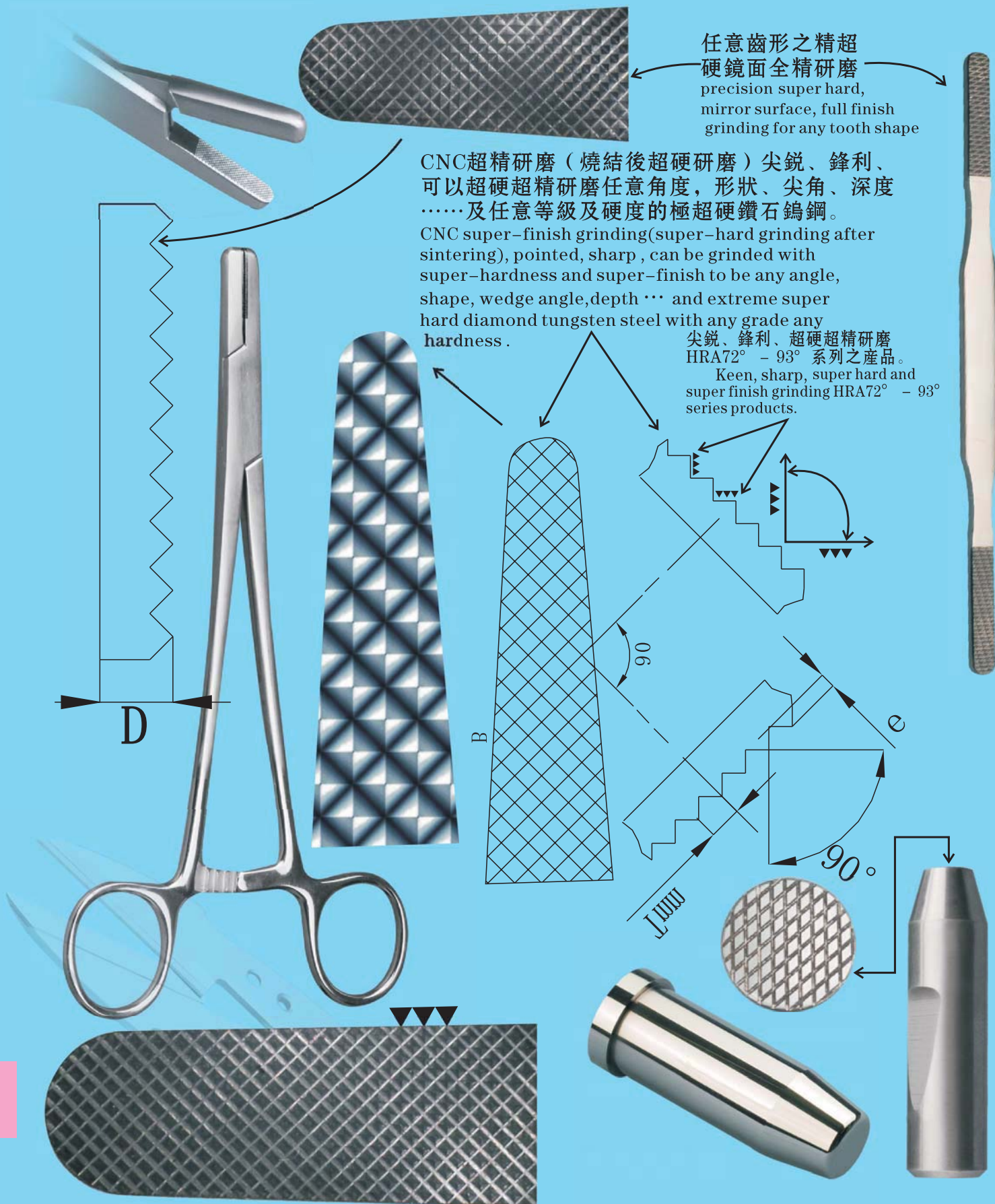
刃部材料類型：

1. 鎢鋼類 (HRA81° ~94°)系列，
(HRC60° ~84°)系列(AA)(常規常備)。
2. 陶瓷類 (HRA85° ~94°)系列，
(HRC67° ~84°)系列。
3. 超高防銹高耐磨不銹鋼類(AA)
(HRC54° ± 2° 斷面)。
4. 常規標準防銹高耐磨不銹鋼類(A)
(HRC45° ~64° 斷面)系列。
5. 鈦及鈦合金類(HRC35° ~42°)系列

Material of cutting edge:

1. Carbide (HRA81° ~94°) series, (HRC60° ~84°) series(AA)(regular stock)
2. Ceramic (HRA85° ~94°)series, (HRC67° ~84°) series
3. ultra-high anti-rust high wear-resistant stainless steel(AA)(HRC54° ± 2° Section)
4. general anti-rust high wear-resistant stainless steel(A)(HRC45° ~64° Section) series
5. Titanium and Titanium alloy (HRC35° ~42°) series

★ 可以依圖依樣鏡面研磨加工任意材種，形狀、特殊、異型、精度公差之產品。We can make tools with any material, any shape, special kind, special type, abnormal shape and precision and tolerance by mirror surface grinding according to your drawings or samples



任意齒形之精超
 硬鏡面全精研磨
 precision super hard,
 mirror surface, full finish
 grinding for any tooth shape

CNC超精研磨(燒結後超硬研磨)尖銳、鋒利、
 可以超硬超精研磨任意角度, 形狀、尖角、深度
 ……及任意等級及硬度的極超硬鑽石鎢鋼。
 CNC super-finish grinding(super-hard grinding after
 sintering), pointed, sharp, can be grinded with
 super-hardness and super-finish to be any angle,
 shape, wedge angle, depth ... and extreme super
 hard diamond tungsten steel with any grade any
 hardness.

尖銳、鋒利、超硬超精研磨
 HRA72° - 93° 系列之產品。
 Keen, sharp, super hard and
 super finish grinding HRA72° - 93°
 series products.

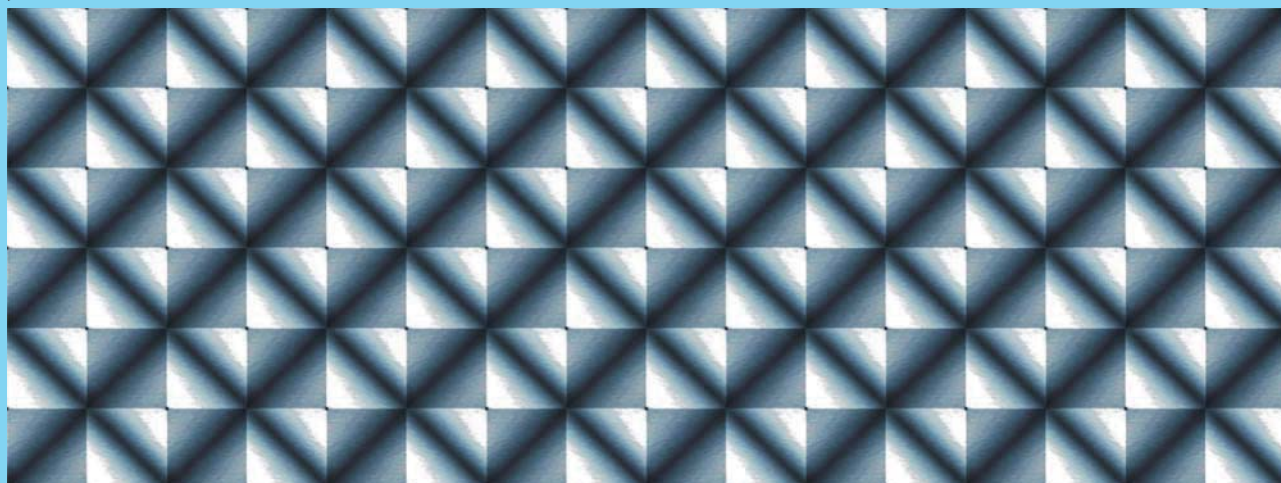
D

B

90°

e
 90°

mm



★可超硬、超精研磨，任意的容屑槽寬度、刃背方式、刃部結構、刃口角度、刃口鋒利程度之要求，及尺寸公差要求。We can produce with super hard and super finish grinding. It can be any chip flute width, land, cutting structures, cutting edge angles, sharpness and dimension tolerance.

部分材質說明some material description:

HTF10 (超高耐磨用及淬火熱處理後工件的加工):

極超微粒鑽石鎢鋼，具有極高的耐磨耗性能，但抗衝擊性能略差些。適用於各類要求極高耐磨耗性能材料的中低速輕切削加工。一般用於良好的工況、穩定的切削、優良的零件裝夾及持續的輕型加工。相應一般鎢鋼，具有4~6倍以上的使用壽命。相應ISO K10~K25/P10~P25。

HTF10 (Machining of super high wear-resistant and quenched and heat treated work pieces): Ultra micro-grain quality carbide is ultra high wear resistant, but less impact-resistant. It is applied in mid and low speed light cutting of various materials that require ultra high wear resistance.

Generally, it is applied in good work condition, stable cutting, good part fixture and continuous light-duty machining. Comparing with general tungsten steel, it has 4~6 times more life time.

Conforming to ISO K10~K25/P10~P25.

VRA201:進口極超微粒鑽石鎢鋼

具有極為優秀的抗衝擊性能和一般的耐磨耗性能。一般用於較差或普通的設備加工較低硬度的材料 ($HRC \leq 25^\circ$)、間斷切削和很差的零件夾緊。相應ISO K25，可替代M42、ASP60、MPM、HSSCo10等材料的加工，并可取得4~6倍左右的使用壽命。具有極強的性價比。相應SKH51具有15~25倍的使用壽命及耐用度。

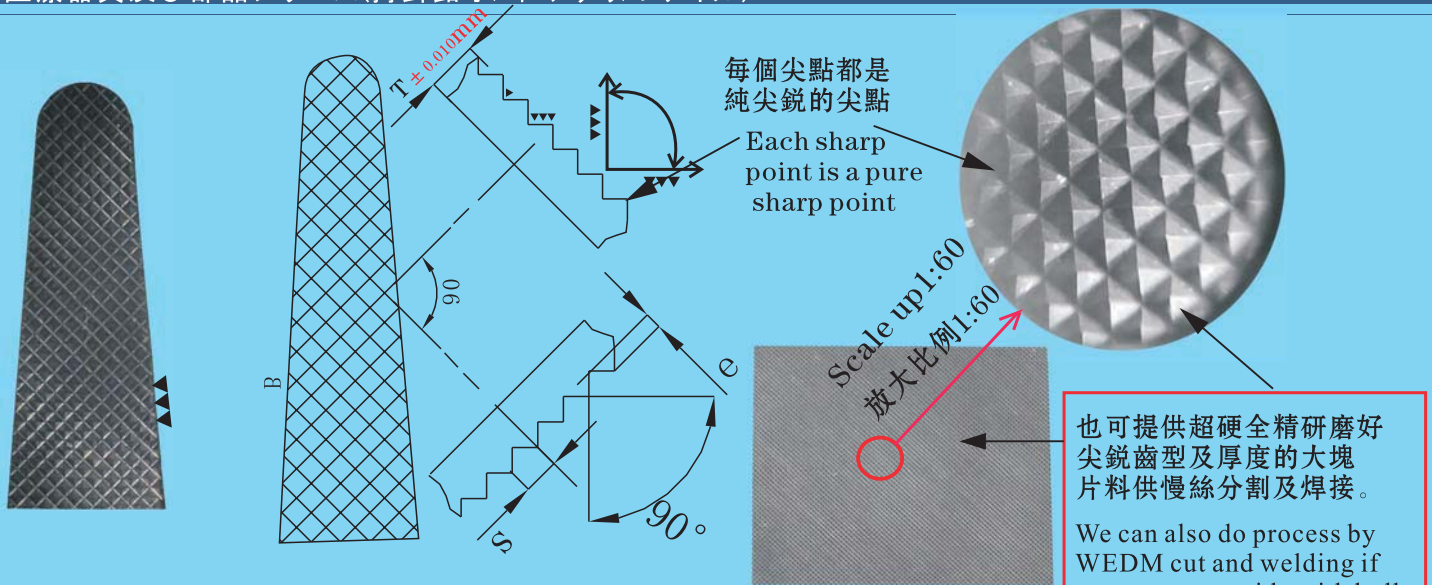
VRA201: Imported ultra micro-grain quality carbide with excellent impact-resistance and general wear-resistance. Generally applied in worse or general equipment to machine materials of lower hardness ($HRC \leq 25^\circ$), discontinuous cutting and worse part fixture. Conforming to ISO K25, can replace machining of materials like M42, ASP60, MPM, HSSCo10 etc, and can get 4~6 times lifetime, it has higher performance/price ration. Comparing with SKH51, it has 15~25 times lifetime and durability.

PR40A/H10F:(常規常備)

極超微粒鑽石鎢鋼，泛用型，可用於 $HRC \leq 28^\circ$ 各種材料的中低速粗切至精切削加工，具有較為優秀的抗衝擊性能和一般的耐磨耗性能，應用範圍廣。一般用於較厚的切削量、間斷切削及較差的零件夾緊。塗層後效果較佳，可加工至 $HRC50^\circ$ 的各種材料，相應ISO K20。相應一般鎢鋼，具有1~2倍的使用壽命和極優秀的耐衝擊性能。

PR40A/H10F:(regular stock)

Ultra-fine particle diamond tungsten steel, universal type, can be used in medium-low-speed rough cutting and finish cutting processing of various materials with $HRC \leq 28^\circ$, with excellent impact resistance and general wear resistance performance, also a wide range of applications. It is generally applied in thicker cuts, intermittent cuts, and poor part clamping. The effect is better after coating, can process various materials with $HRC50$, corresponding to ISO K20. Comparing with general tungsten steel, it's with 1~2 times longer lifetime and very excellent impact resistance.

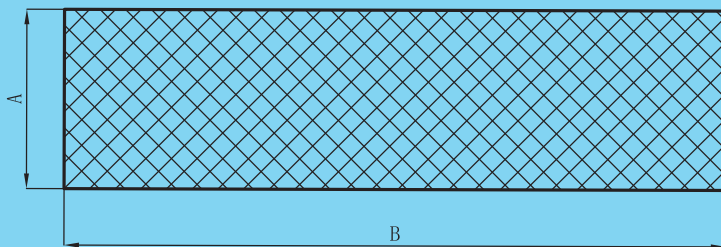


部分尺寸some size:

厚度T Thickness	0.4	0.5	0.5	0.6	0.6	0.6	0.65	0.65	0.7	0.7	0.74
齒間距S space width	0.4	0.4	0.5	0.3	0.4	0.5	0.3	0.4	0.4	0.5	0.4

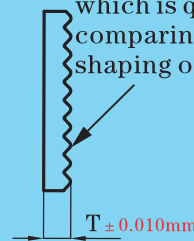
也可提供超硬全精研磨好尖銳齒型及厚度的大塊片料供慢絲分割及焊接。

We can also do process by WEDM cut and welding if customers provide with bulk Sheet with super hard full finish grinding sharp tooth forms and thickness



純尖銳尖點超精研磨，與模具成型的天差地別

Pure-sharp-point super-finish grinded, which is quite different comparing with the mold shaping ones



部分尺寸some size:

寬度A wide	7.5	9.0	13	15	15	15	16	16	17	17	17	17	20	20	21.5	26.0
長度B length	2.9	5.3	3.6	4.8	5.1	5.1	5.2	5.2	4.5	5.6	6.5	6.5	6.0	6.0	7.0	7.0
厚度T Thickness	0.5	0.6	0.5	0.7	0.65	0.65	0.4	0.7	0.7	0.65	0.6	0.6	0.7	0.74	0.7	0.7
齒間距S space width	0.4	0.4	0.5	0.4	0.3	0.4	0.4	0.5	0.5	0.4	0.3	0.5	0.4	0.5	0.5	0.5